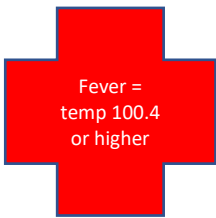
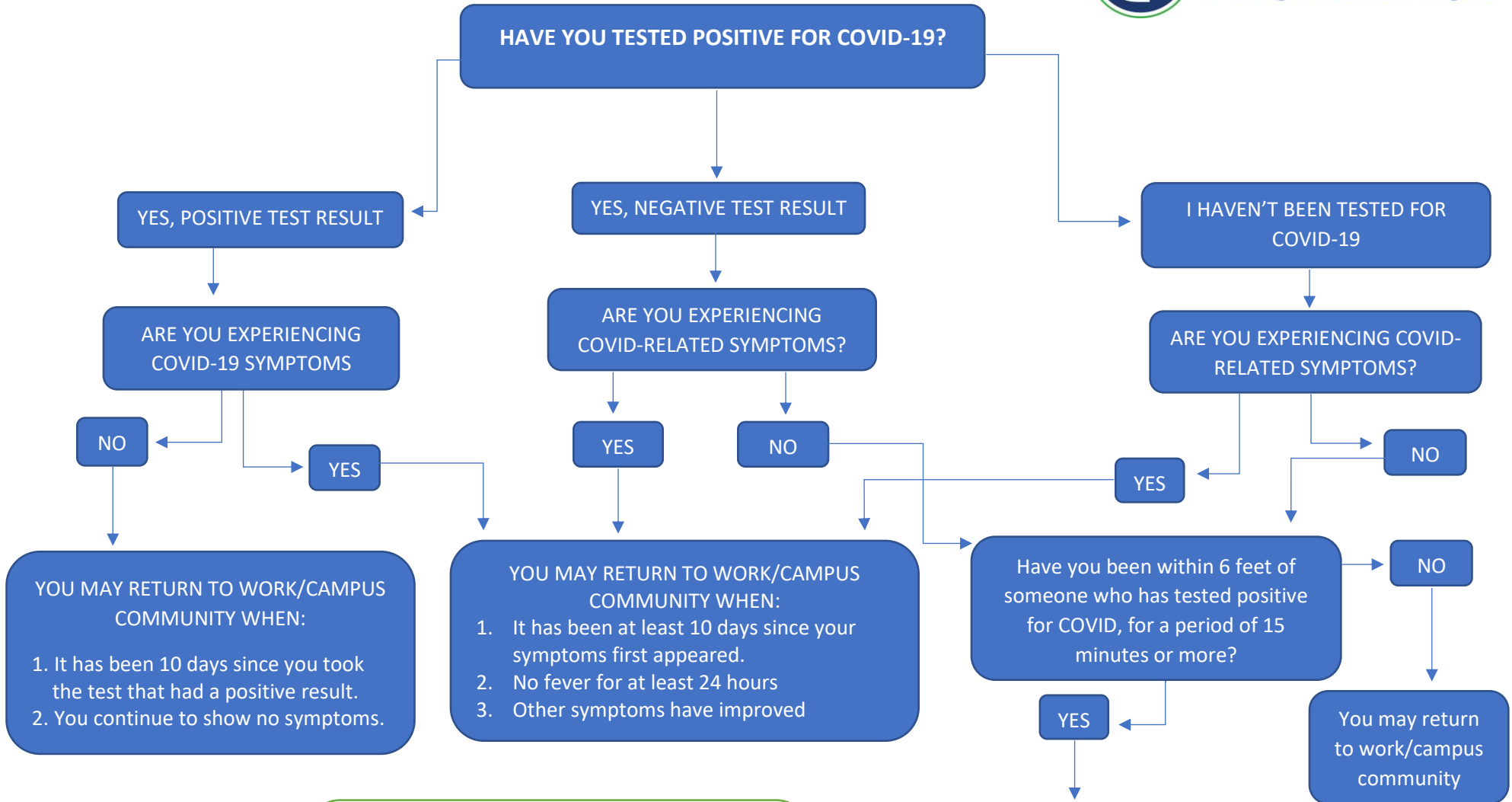


Employee – COVID Testing Flow Chart



CDC advice on when to seek emergency medical attention:
Call 911 or go directly to the Emergency Room

- shortness of breath
- trouble breathing
- new confusion
- inability to wake or stay awake
- bluish lips or face

YOU MAY RETURN TO WORK/CAMPUS COMMUNITY WHEN:

1. It has been 14 days from date of exposure.
2. No symptoms are present.